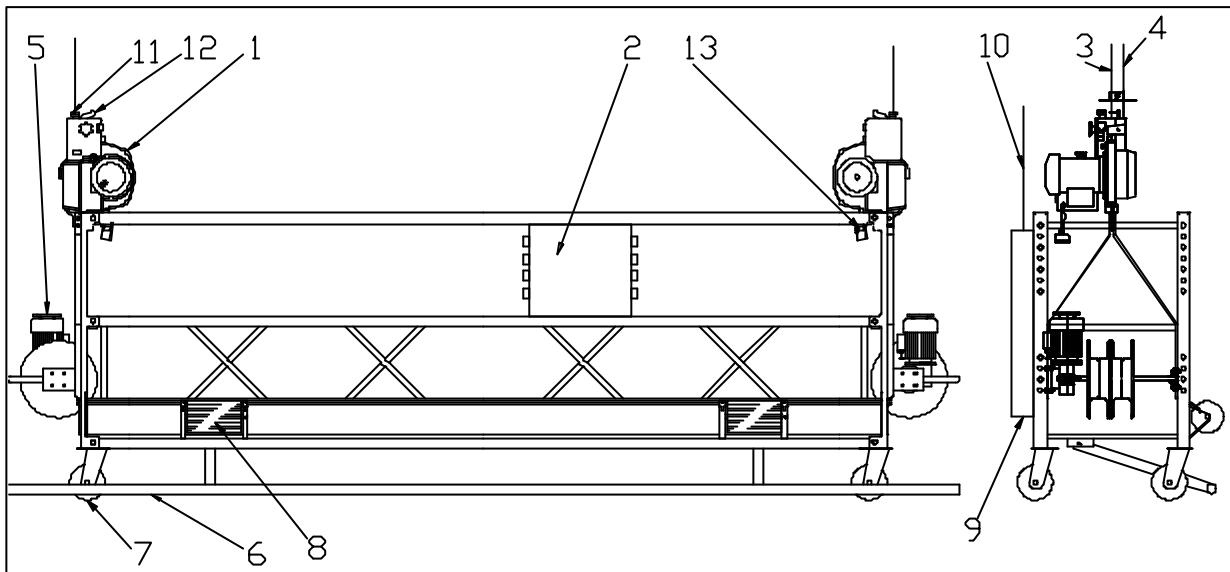


Building Maintenance Unit - ASTRO hoist



Standard features

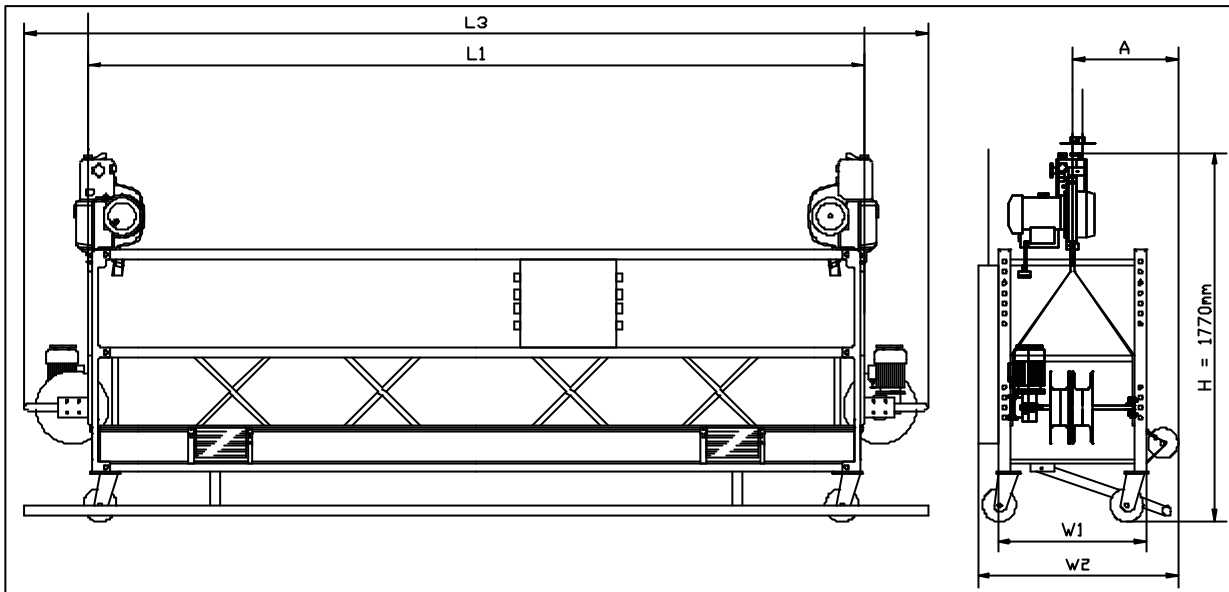
- Lightweight aluminium construction
- Powered by ASTRO hoist with thermal protection in series **(1)**
- Power supply: 3x415V+**Neutral** +Earth, three phase, 50Hz **(10)**
- Slack rope safety device **(12)**
- Overspeed safety device with electrical interlock in series
- Top limit switch in series **(11)**
- Bottom limit trip bar **(6)**
- Electro-mechanical overload detection device in series **(14)**
- 'No Power' emergency descent system
- Twin-drum wire winders up to 125m **(5)**
- Toeboard protection for wire winder
- External protection bar for wire winder
- Cable bin **(9)**
- Low-noise castor wheels Ø160mm **(7)**
- Non-marking soft wall rollers **(8)**
- Safety harness attachment points
- Climbing speed: 8.5 m/min.
- Safety rope **(4)** and suspension rope **(3)**: Ø 8.4 mm (52.3 kN)

Central Control Box (2)

- Hold to run 'up/down' operating buttons
- Emergency stop
- Hoist selector switch (left/both/right)
- Main power switch
- 230V control circuit
- Overload warning light
- Bottom trip bar bypass button
- Automatic levelling system
- 'Power On' indicator light
- Thermal protection for wire winder motors
- Hourmeter
- Phase protector
- Phase reversing power plug

Optional

- Long drops up to 200m
- Flat cladding on four sides (solid aluminium plate)
- Round-end cladding (solid aluminium plate only)
- Perforated cladding
- Telescopic wall rollers
- RAL painting
- Controls for monorail trolleys
- Other power supplies on special request



Width over guardrail	700 mm
A = Distance suspension wire to façade	515 mm
W1 = Nominal width	765 mm
W2 = Overall width	990 mm

PLATFORM TYPE	2 m	3 m
L1 = Suspension rope centres	2057 mm	2974 mm
L3 = Overall length with 85m W/W	2750 mm	3667 mm
Self-weight (See note 1)	300 kg	350 kg
Safe Working Load (SWL)	2500 N	2500 N

- (1) Self-weight without steel wire rope and power supply cable.
Add 1.35 kg/m for steel wire rope and power supply cable.

Ref.: 38201-01	Issue Date: 10-okt-2003
POWER CLIMBER bvba Tel: +32-3-451.05.00 Fax: +32-3-451.05.01 E-mail: Info@PowerClimber.be	POWER CLIMBER ASIA Ltd Tel: 852-2310.2855 Fax: 852-2745.0755 E-mail: Infopcal@powerclimber.com.hk
Website: www.PowerClimber.be	

*This document and all copies are property of Power Climber bvba. All dimensions and data are indicative only.
The user must ensure that the equipment complies with local rules and regulations.*