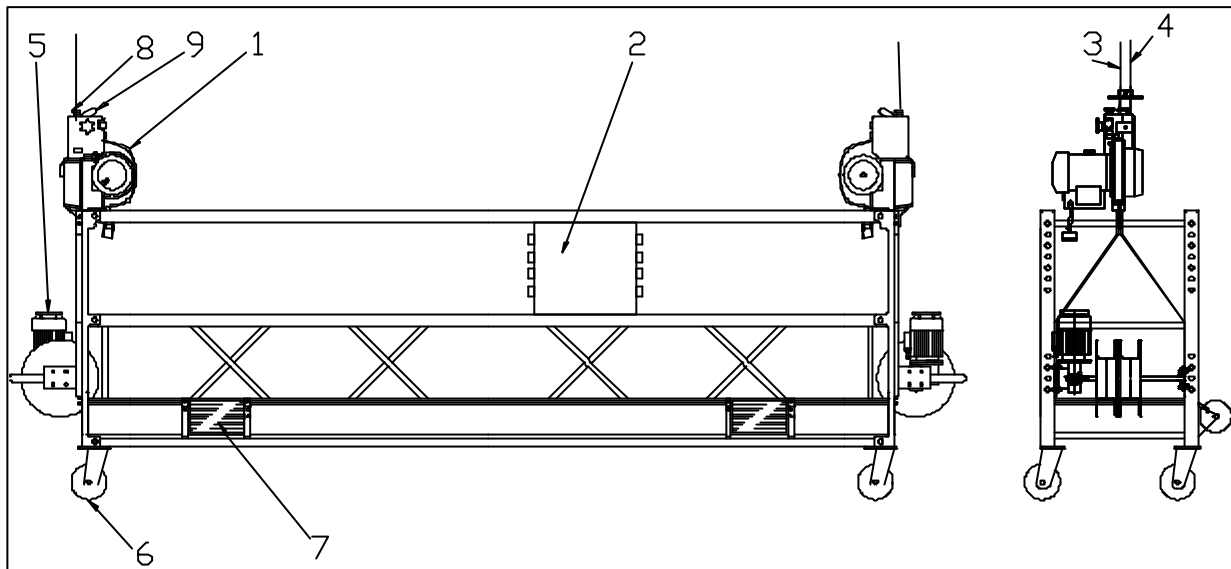


## Building Maintenance Unit - ASTRO hoist



### Standard features

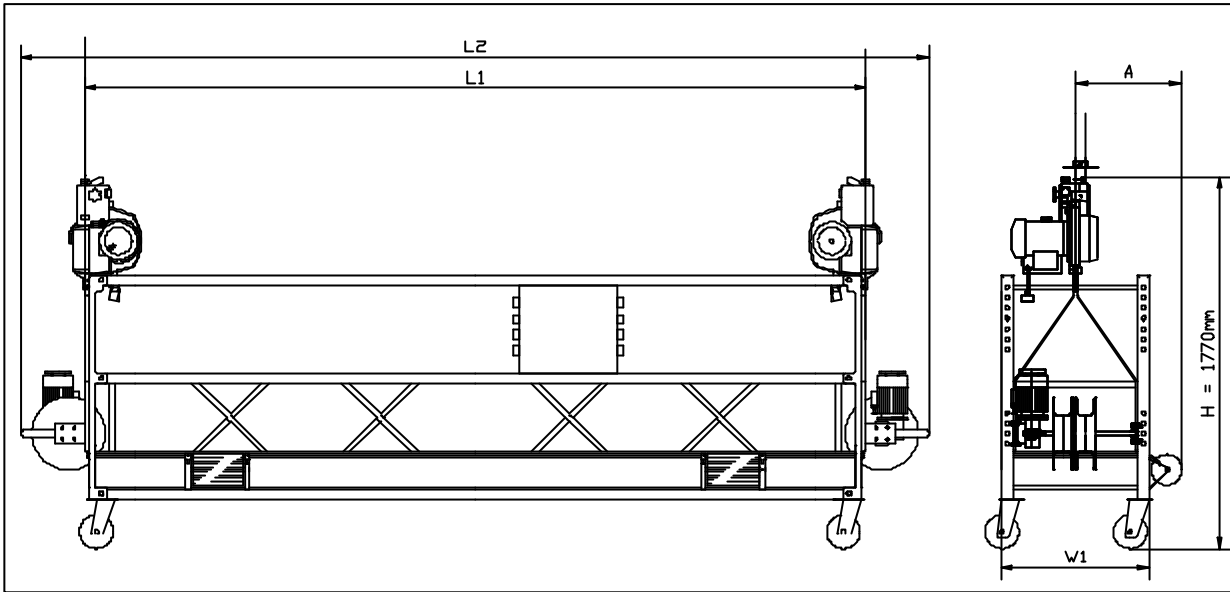
- Lightweight aluminium construction
- Powered by ASTRO hoist with thermal protection **(1)**
- Power supply: 3x415V+**Neutral** +Earth, three phase, 50Hz
- Slack rope safety device **(9)**
- Overspeed safety device with electrical interlock in series
- Top limit switch in series **(8)**
- 'No Power' emergency descent system
- Twin-drum wire winders up to 125m **(5)**
- Toeboard protection for wire winder
- External protection bar for wire winder
- Low-noise castor wheels Ø160mm **(6)**
- Non-marking soft wall rollers **(7)**
- Safety harness attachment points
- Climbing speed: 8.5 m/min.
- Safety rope **(4)** and suspension rope **(3)**: Ø 8.4 mm (52.3 kN)

### Central Control Box (2)

- Hold to run 'up/down' operating buttons
- Emergency stop
- Hoist selector switch (left/both/right)
- 230V control circuit
- 'Power On' indicator light
- Thermal protection for wire winder motors
- Phase protector
- Phase reversing power plug

### Optional

- Long drops up to 200m
- Telescopic wall rollers
- Cable bin
- Overload detection device (not in series)
- Other power supplies on special request



<b>Width over guardrail</b>	700 mm
<b>A = Distance suspension wire to façade</b>	515 mm
<b>W1 = Nominal width</b>	765 mm

<b>PLATFORM TYPE</b>	<b>2 m</b>	<b>3 m</b>
<b>L1 = Suspension rope centres</b>	2057 mm	2974 mm
<b>L2 = Overall length with 85m W/W</b>	2750 mm	3667 mm
<b>Self-weight (See note 1)</b>	300 kg	350 kg
<b>Safe Working Load (SWL)</b>	2500 N	2500 N

- (1) Self-weight without steel wire rope and power supply cable.  
Add 1.35 kg/m for steel wire rope and power supply cable.

Ref.: 38203-01	Issue Date: 10-okt-2003
POWER CLIMBER bvba Tel: +32-3-451.05.00 Fax: +32-3-451.05.01 E-mail: <a href="mailto:Info@PowerClimber.be">Info@PowerClimber.be</a>	POWER CLIMBER ASIA Ltd Tel: 852-2310.2855 Fax: 852-2745.0755 E-mail: <a href="mailto:Infopcal@powerclimber.com.hk">Infopcal@powerclimber.com.hk</a>
Website: <a href="http://www.PowerClimber.be">www.PowerClimber.be</a>	

*This document and all copies are property of Power Climber bvba. All dimensions and data are indicative only.  
The user must ensure that the equipment complies with local rules and regulations.*